

VALLE ROBLES, Juan

Architectural guide Madrid : buildings and projects since 1919 / Juan Valle Robles, Irene Valle Robles

Berlin : DOM, cop. 2017

175 p. : fot. col., plan., secc., alz., il. ; 25 cm.

Listado de arquitectos

Listado de edificios

ISBN 978-3-86922-398-8

1. Madrid 2. Guías de arquitectura 3. Edificaciones 4. Siglo XX 5. Siglo XXI

I. Valle Robles, Irene

5.09 Guías

COAM GUÍA-MAD-ARC

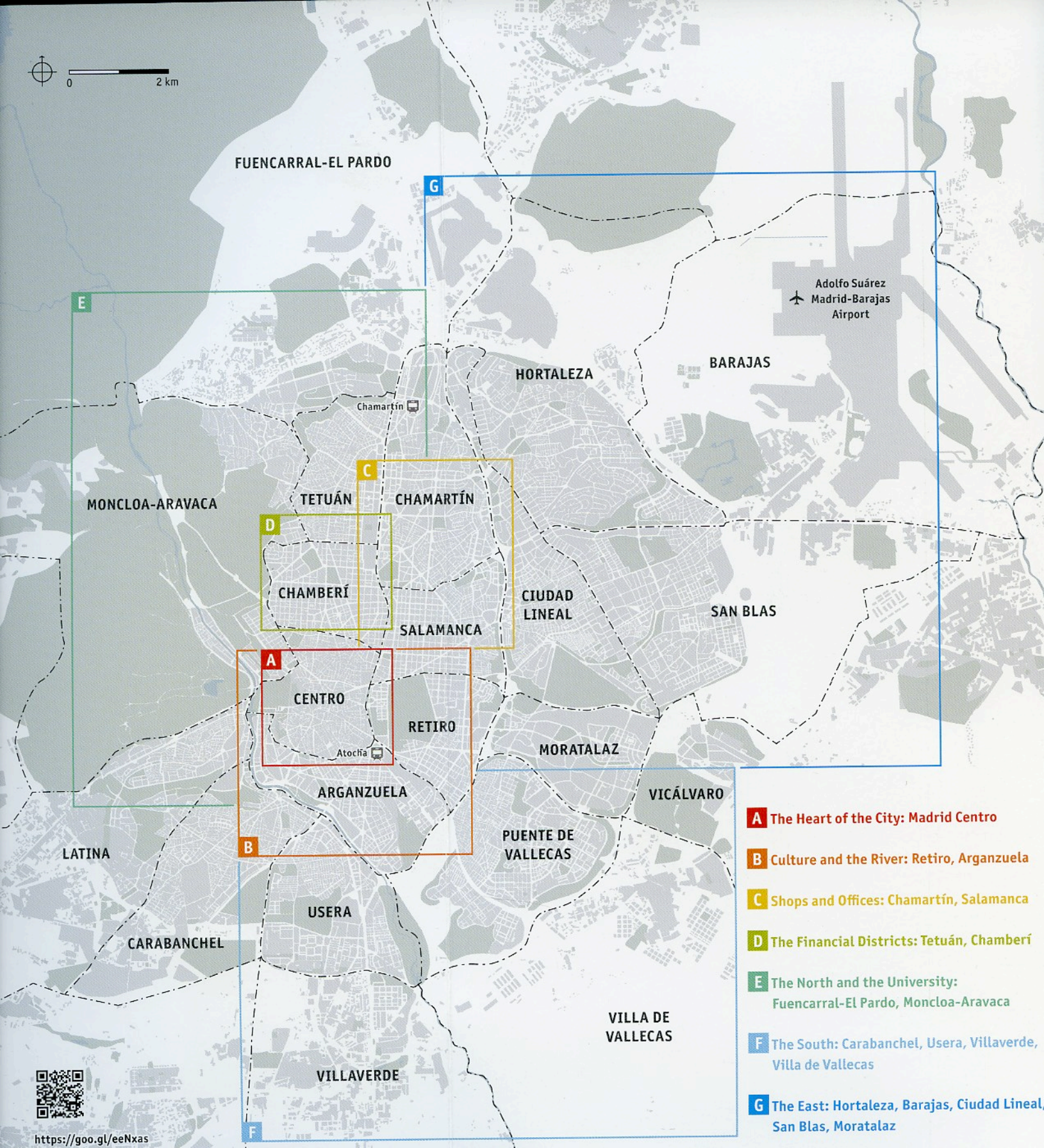
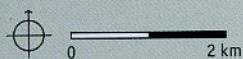
Architectural Guide Madrid

Buildings and Projects since 1919

Juan Valle Robles
Irene Valle Robles



DOM
publishers



FUENCARRAL-EL PARDO

G

Adolfo Suárez
Madrid-Barajas
Airport

BARAJAS

HORTALEZA

MONCLOA-ARAVACA

TETUÁN

CHAMARTÍN

D

CHAMBERÍ

SALAMANCA

CIUDAD
LINEAL

SAN BLAS

A

CENTRO

RETIRO

MORATALAZ

ARGANZUELA

VICÁLVARO

LATINA

B

PUENTE DE
VALLECAS

USERA

CARABANCHEL

VILLA DE
VALLECAS

VILLAVERDE

F

A The Heart of the City: Madrid Centro

B Culture and the River: Retiro, Arganzuela

C Shops and Offices: Chamartín, Salamanca

D The Financial Districts: Tetuán, Chamberí

E The North and the University:
Fuencarral-El Pardo, Moncloa-Aravaca

F The South: Carabanchel, Usera, Villaverde,
Villa de Vallecas

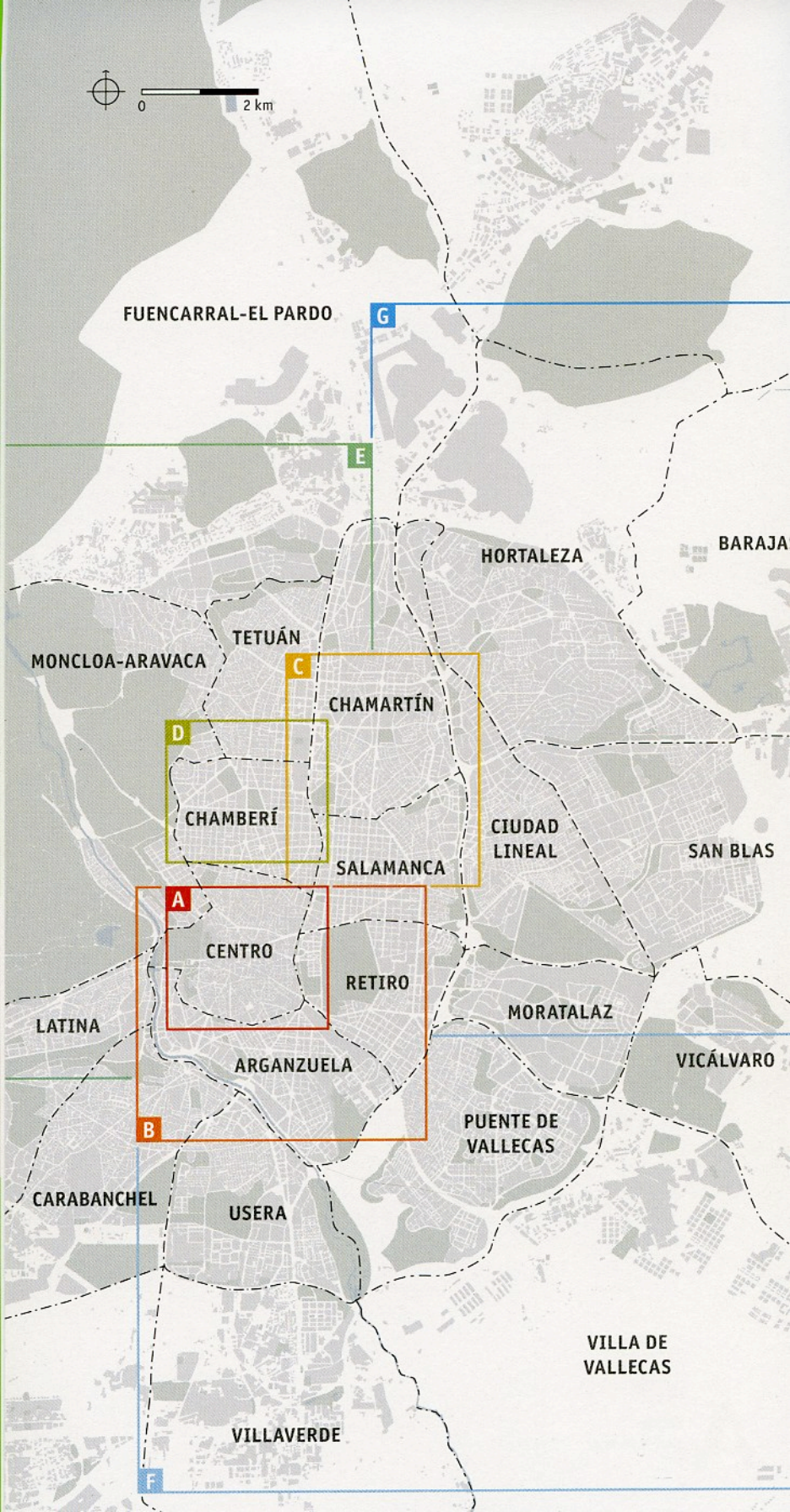
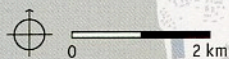
G The East: Hortaleza, Barajas, Ciudad Lineal,
San Blas, Moratalaz



Architectural Guide Madrid

Buildings and Projects since 1919

Juan Valle Robles
Irene Valle Robles



Contents

Introduction	6
Madrid Metropolis	8
A The Heart of the City: Madrid Centro	14
B Culture and the River: Retiro, Arganzuela	38
C Shops and Offices: Chamartín, Salamanca	68
D The Financial Districts: Tetuán, Chamberí	94
E The North and the University: Fuencarral–El Pardo, Moncloa–Aravaca	112
F The South: Carabanchel, Usera, Villaverde, Villa de Vallecas	138
G The East: Hortaleza, Barajas, Ciudad Lineal, San Blas, Moratalaz	152
Index of Architects	170
Index of Buildings	172
Photo Credits	174
Authors, Acknowledgements	175

Introduction

The Gran Vía project, an ambitious operation that spanned four decades, was undoubtedly one of the biggest urban operations ever undertaken in Madrid. It began at the same time as the Haussmann urban renewal plan for Paris, and had an enormous social, economic and cultural impact on the city. The completion of works on Gran Vía around 1929 marked the start of Madrid's transition from an old historic city to a modern metropolis. This architectural guide looks at some of the

most important projects in Madrid since 1919, including several that have been built recently.

The 150 projects in this guide are arranged in seven routes through the 21 districts that comprise the Madrid municipality. Most of them can be viewed from the outside and entered, visited by appointment or are open to the public during the Madrid Architecture Week held every October, when guided tours of the city's most interesting buildings are available.



The *Deutsche Nationalbibliothek* lists this publication in the *Deutsche Nationalbibliografie*; detailed bibliographic data are available on the Internet at <http://dnb.d-nb.de>.

ISBN 978-3-86922-398-8 (english)

ISBN 978-3-86922-591-3 (spanish)

© 2017 by DOM publishers, Berlin

www.dom-publishers.com

This work is subject to copyright. All rights are reserved, whether the whole part of the material is concerned, specifically the rights of translation, reprinting, recitation, broadcasting, reproduction on microfilms or in other ways, and storage or processing on databases. Sources and owners of rights are stated to the best of our knowledge; please point out any we might have omitted.

Final Proofreading

Clarice Knowles

Translation

Jamie Benyei

Design

Irene Valle Robles

Lupe Bezzina

Maps

Irene Valle Robles

Lupe Bezzina

Printing

Tiger Printing (Hong Kong) Co., Ltd.

www.tigerprinting.hk



DOM
publishers

This guidebook showcases 150 buildings from the past 100 years starting with one of the most influential urban projects ever: the Gran Vía. This main avenue marked a milestone for Madrid which went from being a historic city to the modern capital that it is today. This intervention had been ongoing for almost two decades with the initial phase of construction reaching completion circa. 1917.

A selection of the most relevant buildings thereafter until the present day sheds light on Madrid's architecture in relation to its inherent historical context, including the need for the reconstruction of built heritage after the Spanish Civil War, the influence of the Franco dictatorship lasting for almost forty years, and the new materials and collaborative architecture that have arisen during the current economic crisis, among other aspects.

Seven proposed routes lead us through the different districts that make up the city, as well as those historic epochs that have made Madrid the city it is today.